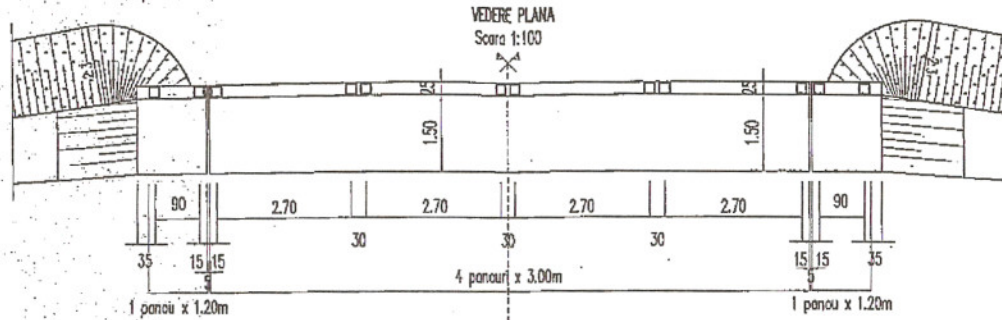
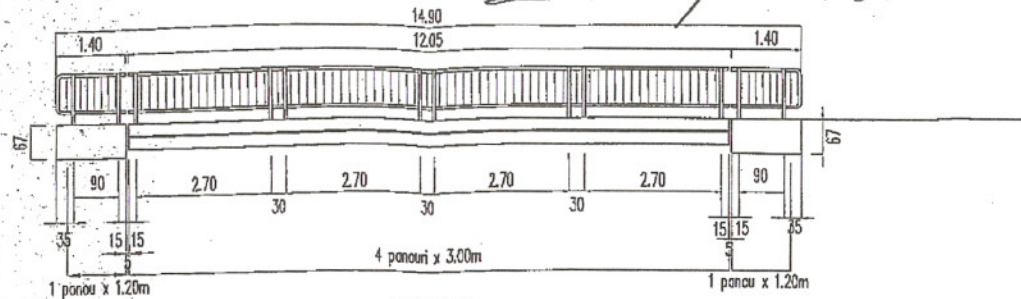
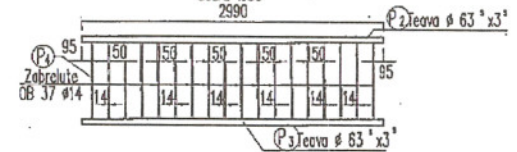


ELEVATIE
Scara 1:100

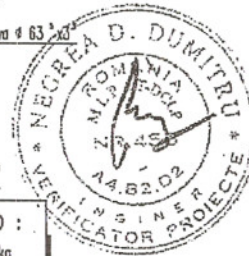
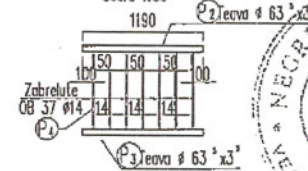
= Parapet Pod Că =



PANOU TIP I - L = 3000 mm
Scara 1:50

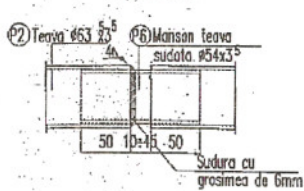


PANOU TIP II - L = 1200 mm
Scara 1:50

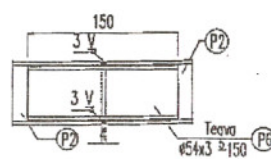


TOTAL PARAPET PIETONAL PENTRU POD :
panouri tip I 2x4buc x 46.82kg=374.56kg
panouri tip II 2x2buc x 18.48kg=73.92kg
stolpi 2x12buc x 32.36/2=388.32kg
piesa de capat 4 buc x 6.52=26.08kg
TOTAL : 863.88 kg

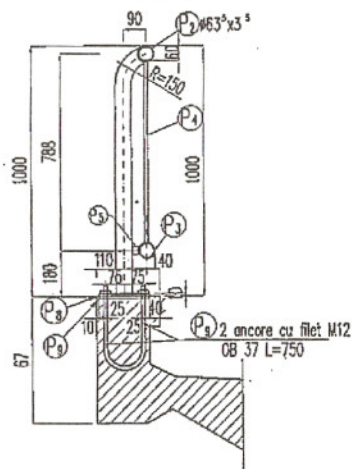
DETALIUL "A"
CONTINUTIAZARE MANA
CURENTA LA ROST
Scara 1:5



DETALIU IMBINARE P2
Scara 1:5



SECTIUNE TRANSVERSALA
Scara 1:20



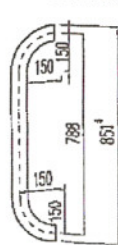
PLACA SUPERIOARA
200x10-200
Scara 1:20



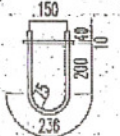
PLACA INFERIOARA
200x10-200
Scara 1:20



P12 #63 x 3
Scara 1:20



P9 ancore #16 L=750



C25/30
OB 37

MASURATOAREA MATERIALULUI METALIC

Nr.ert	PIESA	SECTIUNE	L (mm)	Nr. buc	G / ml (kg/m)	G / buc (kg)	G total (kg)	
PANOU TIP I L=3000mm	P2 MANA CURENTA	φ 63 ⁵ x 3 ⁵	2990	1	5.18	15.49	15.49	
	P3 RIGLA INFERIOARA	φ 63 ⁵ x 3 ⁵	2990	1	5.18	15.49	15.49	
	P4 ZABRELUTA	OB 37 #14	725	18	1.21	0.88	15.84	
	GREUTATE TOTALA PENTRU UN PANOU TIP I							46.82
PANOU TIP II L=1200mm	P2 MANA CURENTA	φ 63 ⁵ x 3 ⁵	1190	1	5.18	6.16	6.16	
	P3 RIGLA INFERIOARA	φ 63 ⁵ x 3 ⁵	1190	1	5.18	6.16	6.16	
	P4 ZABRELUTA	OB 37 #14	725	7	1.21	0.88	6.16	
	GREUTATE TOTALA PENTRU UN PANOU TIP II							18.48
STALP	P1 STALP	φ 63 ⁵ x 3 ⁵	1010	2	5.18	5.23	10.46	
	P4 ZABRELUTA	OB 37 #14	725	2	1.21	0.88	1.76	
	P5 CIEL LAT	30 x 14	264	2	3.30	0.87	1.74	
	P6 MANSON	φ 54 x 3 ⁵	150	1	4.36	0.66	0.66	
	P7 PLACA SUPERIOARA	200 x 10	200	2	15.70	3.14	6.28	
	P8 PLACA INFERIOARA	200 x 10	200	2	15.70	3.14	6.28	
	P9 ANCOARA #16	OB 37 #16	750	4	1.58	1.19	4.74	
	P10 PIULITA M12			8		0.015	0.12	
	P11 SABA M12			8		0.04	0.32	
	GREUTATE TOTALA PENTRU DOI STALPI							32.36
	PIESA DE CAPAT	P12 PIESA DE CAPAT	φ 63 ⁵ x 3 ⁵	1250	1	5.18	6.52	6.52
GREUTATE TOTALA PENTRU O PIESA DE CAPAT							6.52	

s.c. AQUA PROCIV PROIECT s.r.l.
PROIECTARE SI STUDII
str. Tipografie nr.18, Cluj-Napoca

Scara
1:100
1:50
1:20, 1:5

Beneficiar:
ADMINISTRATIA BAZINALA DE APA OLT
Investitia: "Regularizare parau Mitaci
la Tuscudul Nou, judetul Harghita"

Proiect nr.
286/2008

Faza
D.T.+D.E.

Proiectat ing.Istvan Szabo
Desenat ing.Istvan Szabo
Verificat ing.Viorica Sacui
Sef proiect ing.Dan Sacui

Data
2011

Detaliu uzinare parapet pietonal

Planşa nr.
P13